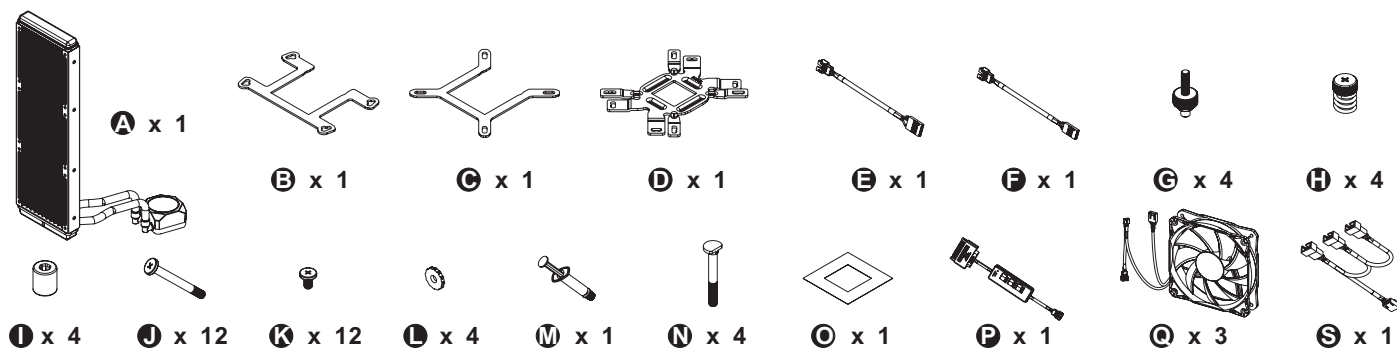
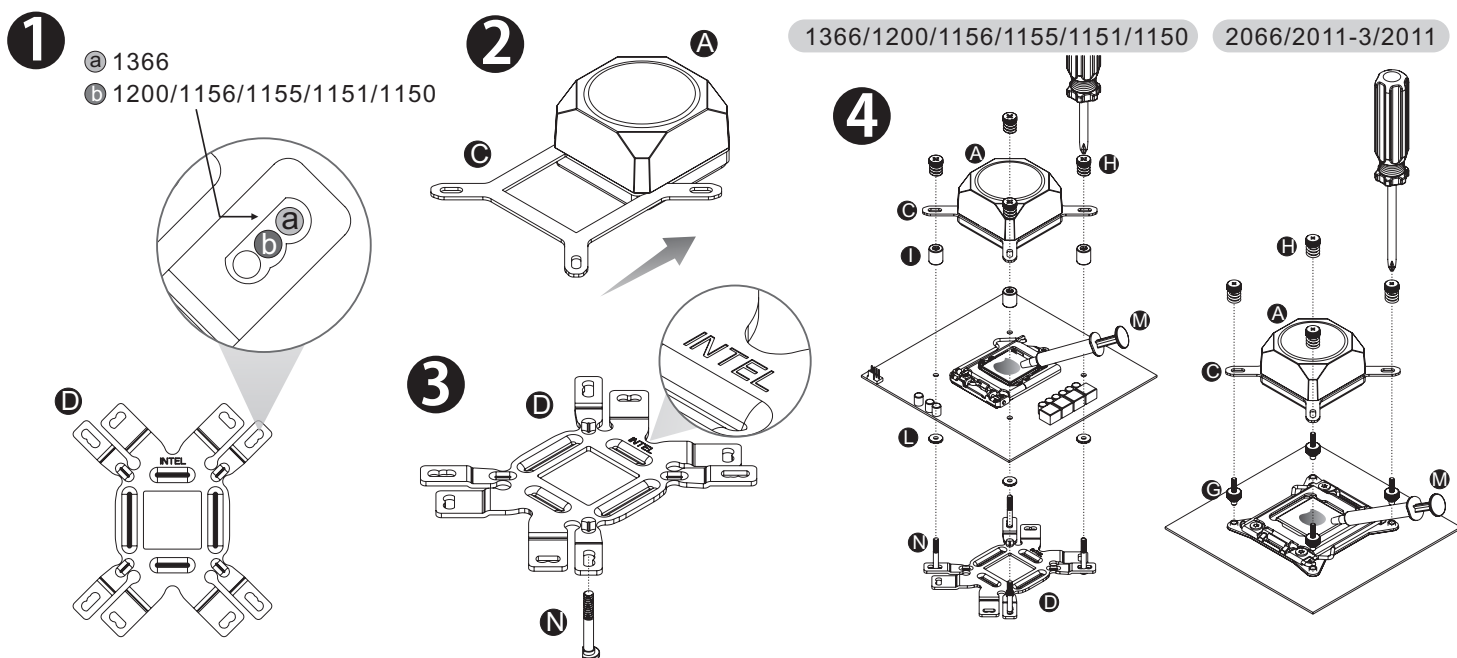


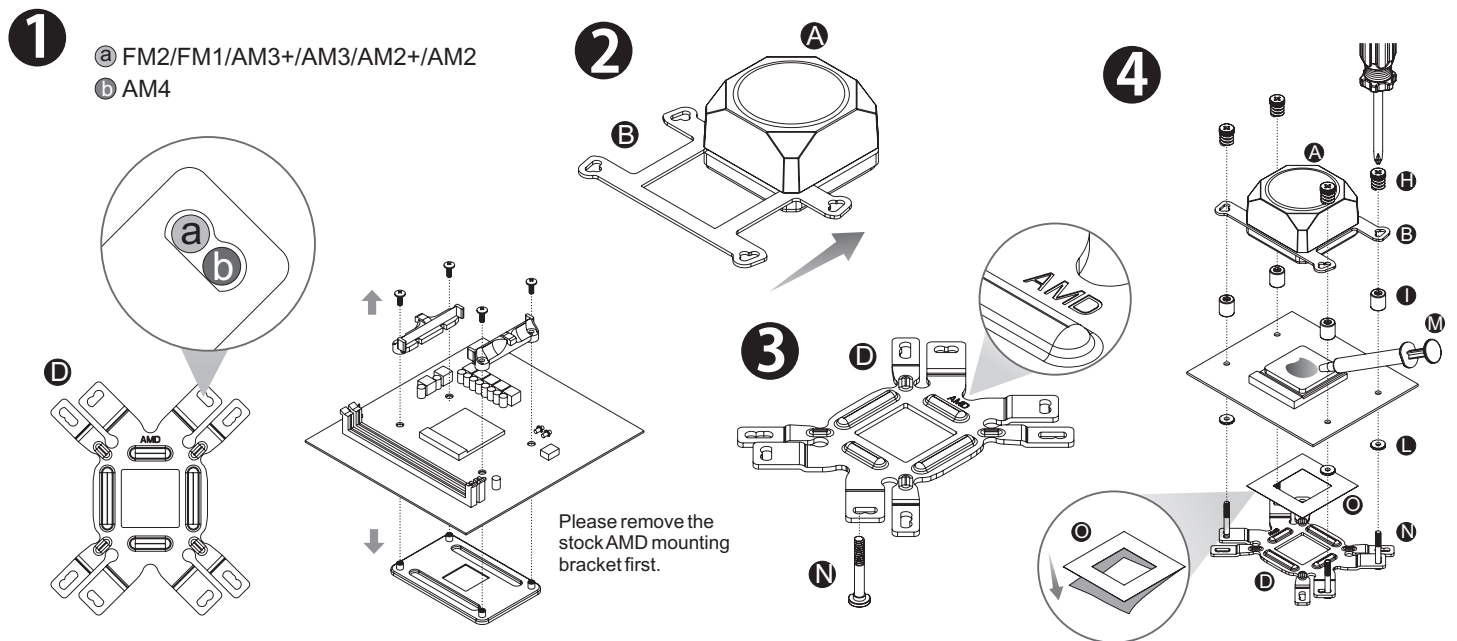
## Parts List



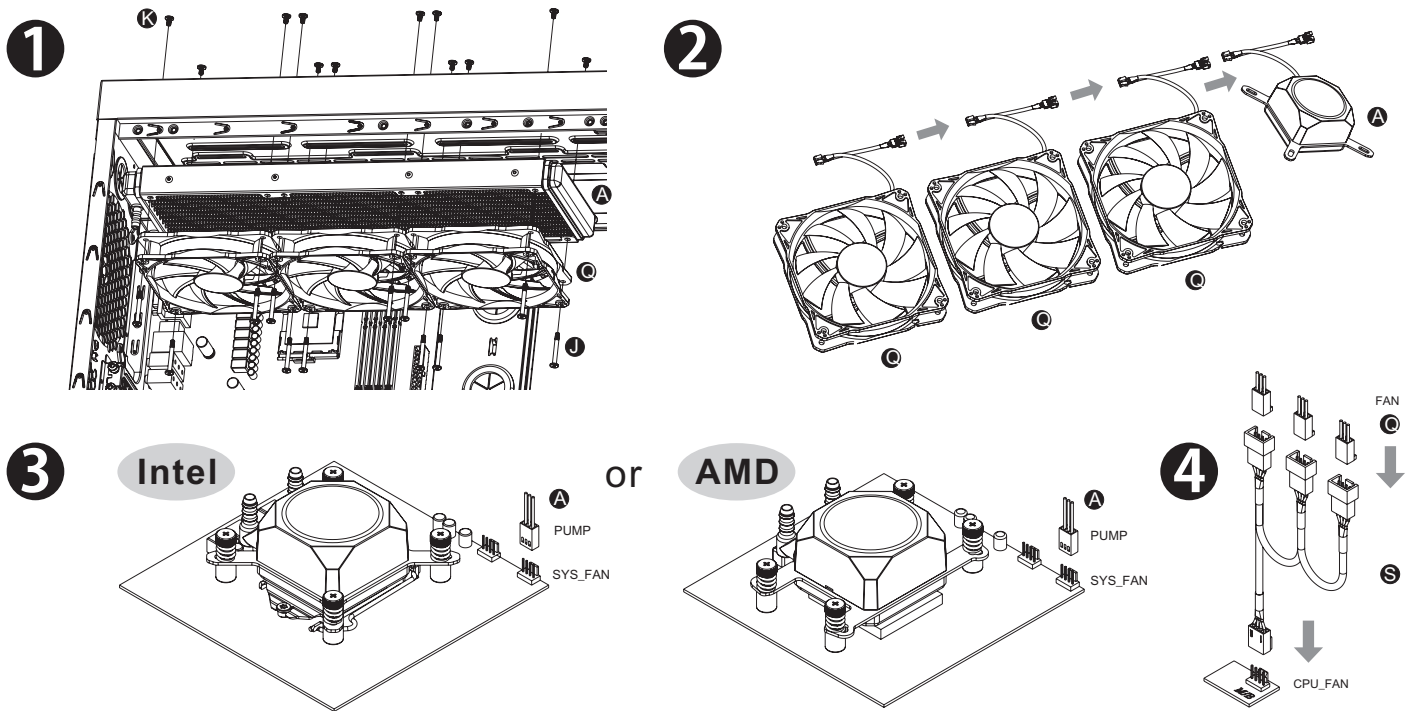
## Intel Installation Guide



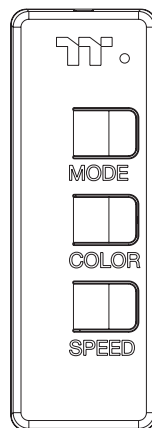
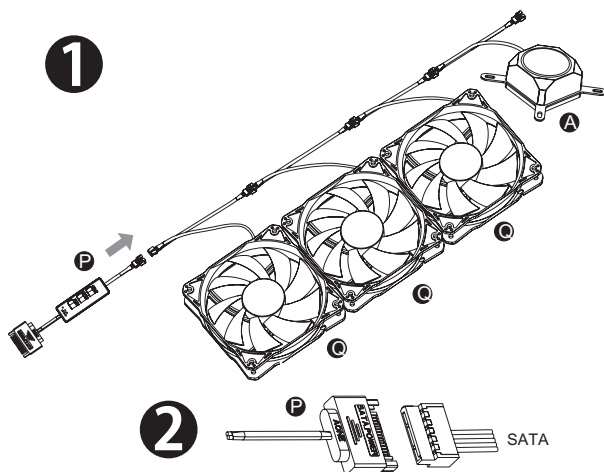
## AMD Installation Guide



# Installation Guide



## ARGB Controller Installation Guide



### 1. Light Mode:

Switch over between 7 LED modes.

Rainbow → Full light → RGB Spectrum → Off → Flow → Radar → Pulse → Blink

### 2. Color Mode:

**When light mode is in Full Lighted, Pulse and Blink :**

Switch over 8 LED colors .

Red → Yellow → Green → Teal → Blue → White → Purple → Rainbow

**When light mode is in Ripple :**

Switch over 7 LED colors .

Red → Yellow → Green → Teal → Blue → White → Purple

**When light mode is in RGB Spectrum:**

Click to memorize and lock the color you want, click again to unlock the 256 colors auto rotation.

**When light mode is in Wave and Flow :**

LED color can not be adjusted.

### 3. Light Speed:

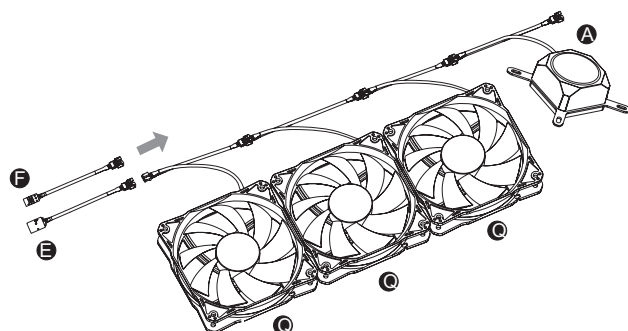
Switch over between 4 light modes.

Slow → Normal → Fast → Extreme

## MB SYNC Installation Guide

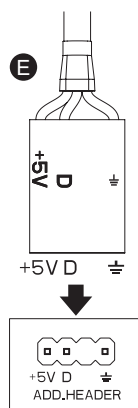
### CAUTION

Please power off the PC and check the Positive and Negative ends on the connector before connecting the cable to motherboard. Connecting the wrong end can damage the fans.



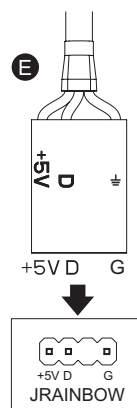
### ASUS/ASRock/BIOSTAR

Aura Addressable Strip Header(s)



### MSI

JRGB-strip Header(S)



### GIGABYTE

AOURS RGB Fusion with Digital LEDs

